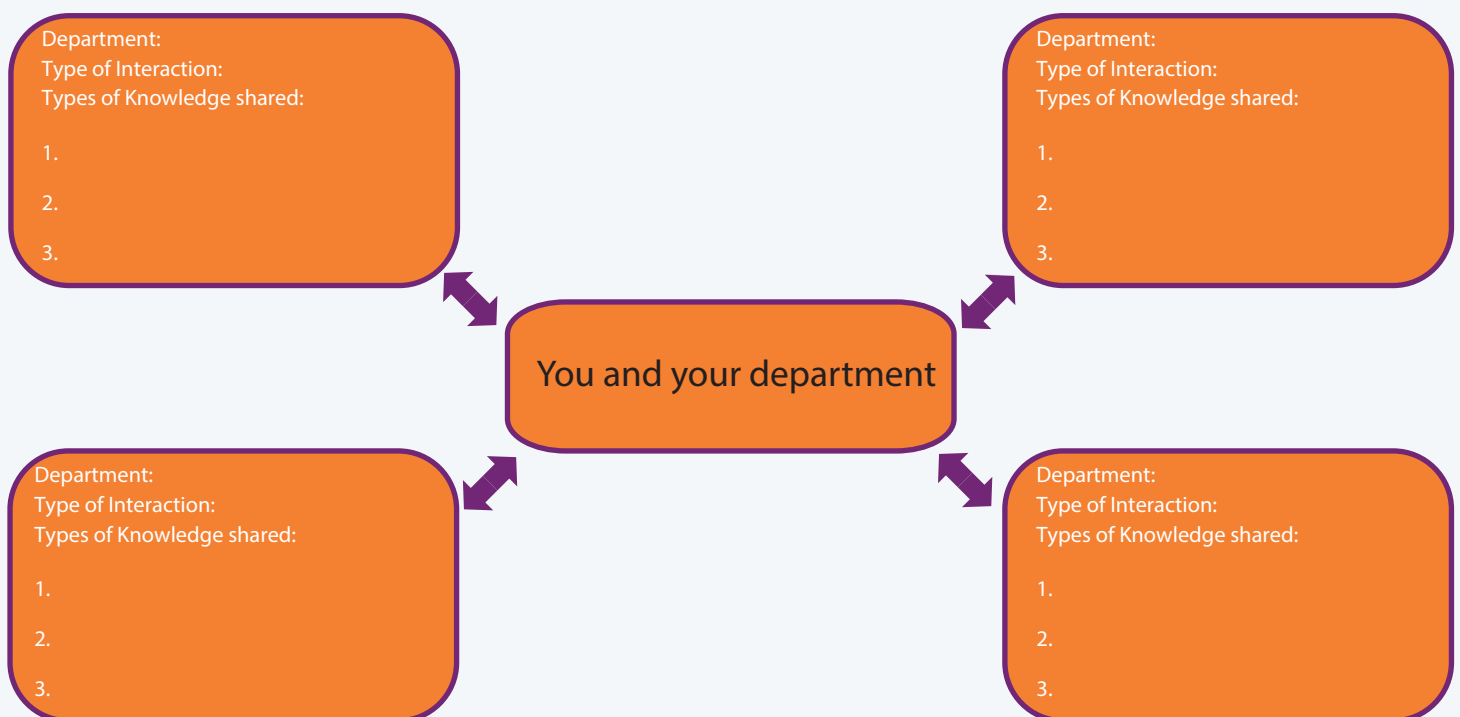


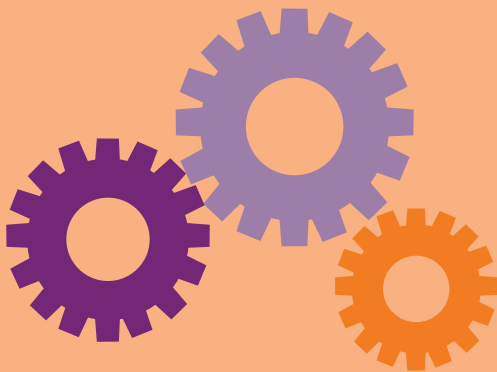
Good to do

Helping you understand collaboration

1. In the diagram below, name **four** departments in your organisation that you or your department interact with.
2. Using the **five** types of interaction model, describe the type of interaction you or your department have with each of the departments you have named.
3. Think about up to **three** types of knowledge that you or your department exchange with each of the departments named. (Consider the difference between **data** and **knowledge**. For example you may share a colleagues attendance record with the Human Resources department (data), but you may also share the reasons why this person has had a poor attendance record recently (knowledge)).



The importance of collaboration



List **three** features of effective collaboration:

1.
2.
3.



Identify **three** implications of ineffective collaboration:

1.
2.
3.